

Specifications

備注 (Remark)

1. 材料 (Material)

膠芯: PA9T/LCP+30%G.F UL94V-0, 顏色: 黑色

Housing: PA9T/LCP+30%G.F UL94V-0, Color: Black

端子: 黃銅

Contact: Brass

2. 特性 (characteristics):

額定電流: 3.00AMP

Rating Current: 3.00AMP

接觸阻抗: 20mΩ Max

Contact Resistance: 20mΩ Max

絕緣阻抗: 1000MΩ Min

Insulating Resistance: 1000 MΩ Min

耐電壓: AC 500V/分鐘

Withstanding Voltage: AC 500V/Minute

溫度範圍: -40° C to +105° C

Temperature Range: -40° C to +105° C



PH254-15RXXXXXXXXXX5

L=A+B+D+25+1.78



PH254-15ZXXXXXXXXXX3

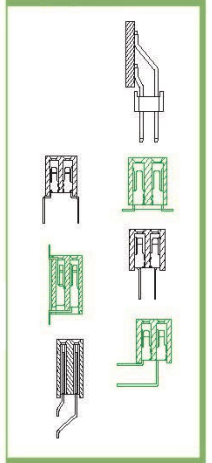
L=B+3.68+3.0



PH254-15ZXXXXXXXXXX4

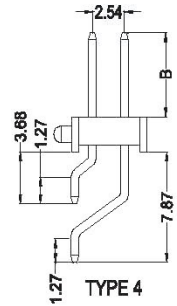
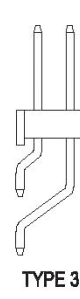
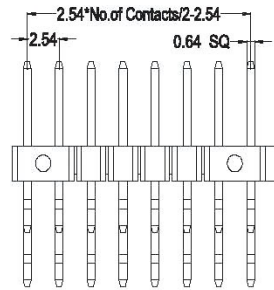
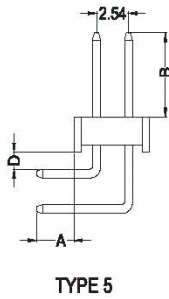
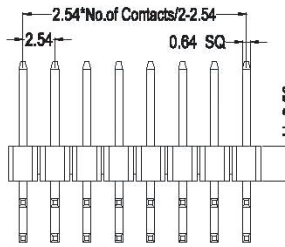
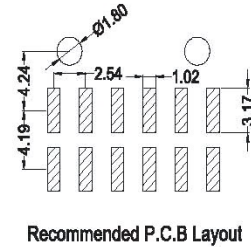
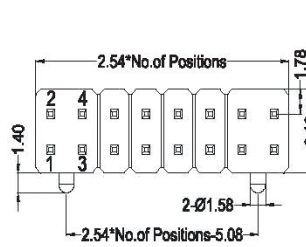
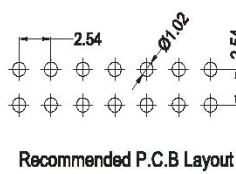
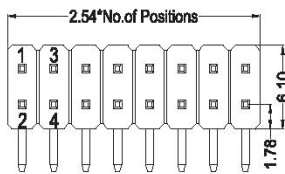
L=B+3.68+3.0

Mating With/配對母座:



U

PIN HEADER



Dimension alternatives list			
ITEM	A	B	D
Standard	3.0	3.0/4.0/5.0/6.0	1.2
Alternate			

Dimension alternatives list	
ITEM	B
Standard	3.0/4.0/5.0/6.0
Alternate	

PH254-15

X

XX

XX

XXX

X

X

Contact Shape:
R: Right Angle
Z: 90° SMT

No. Of Pins Per Row
02-40P

Contact Plating
Full Of Gold
G0=0.8u"
~
G9=30u"
S1=Ordinary Tin Plated
S2=Matte Tin Plated
S3=Tin-plated High-temperature

Length Of Terminal

Packing
A: PE Bag
R: Tape & Reel
T: Tube
D: Tube+CAP
E: Tray

Journal Number
3: Type3
4: Type4
5: Type5